

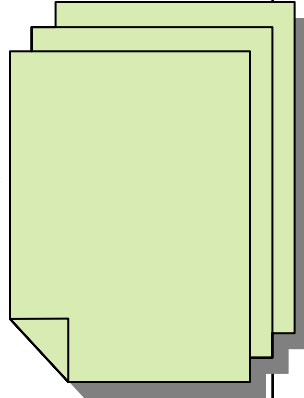
Bathroom Reader

Volume 10, Issue 6

November 15-30, 2008

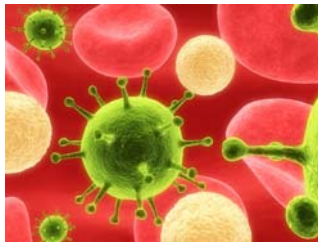
Need help writing your paper?

Come to the **Writing Pad** in Room 1243 in the Library. Bring a copy of your assignment and get help with your paper. Walk-ins or appointments are available and the hours are Monday-Thursday 1-6 PM. For more information come to the Writing Pad or call Jeff Kirchoff at 832-2867.



Bacteria Facts

- Lined up end to end, bacteria would stretch about 10 billion light-years. Or maybe it's easier to visualize from here to the edge of the universe.
- Bacteria have been here for at least **3.5 billion** years...they are the oldest known life form on Earth.
- E. coli bacteria can travel 25 times their own length in 1 second. That's equal to a horse running 135 miles per hour!



Really?

- ⇒ Total votes cast online last fall to decide which Thanksgiving turkeys President Bush should pardon: 27,726
- ⇒ Average number of hours per week that an American and a Chinese person spend shopping: 4 and 10 Hours
- ⇒ Date on which *Playgirl* magazine will become an online-only publication: 11/18/2008

Source: *Harper's Magazine* / November 2008

Drinking and Driving over the holiday season?

It could end up being very expensive according to AAA. Here's a summary:

- Fines can be from \$105 to \$2000
- Court Fees, bail, car impound and towing fees can be \$500 (legal fees can be much higher)
- Driver's License reinstatement is \$60
- Insurances will probably triple for at least 3 years at \$4,500
- Income loss at 4 weeks (jail time, community service, etc) up to \$4000
- Rehabilitation (Alcohol treatment programs, ignition interlock costs, etc) up to \$900

Total Costs (estimated) **\$10,965**

Questions? Feel free to email Wendy Seegers at wendy.seegers@uwc.edu.

Only By Train

The first transcontinental daily railroad service started on November 17, 1887. Service started between Chicago and Portland and between Chicago and San Francisco by the Union Pacific Railroad on a train called the *Overland Limited*.

